







COUNTY MAINTAINED ROADS BY PRECINCT



COMAL COUNTY
ENGINEER'S OFFICE

Legend

Commissioner Precincts

-  Precinct 1
-  Precinct 2
-  Precinct 3
-  Precinct 4
-  Water Bodies
-  Comal County

NOTES:

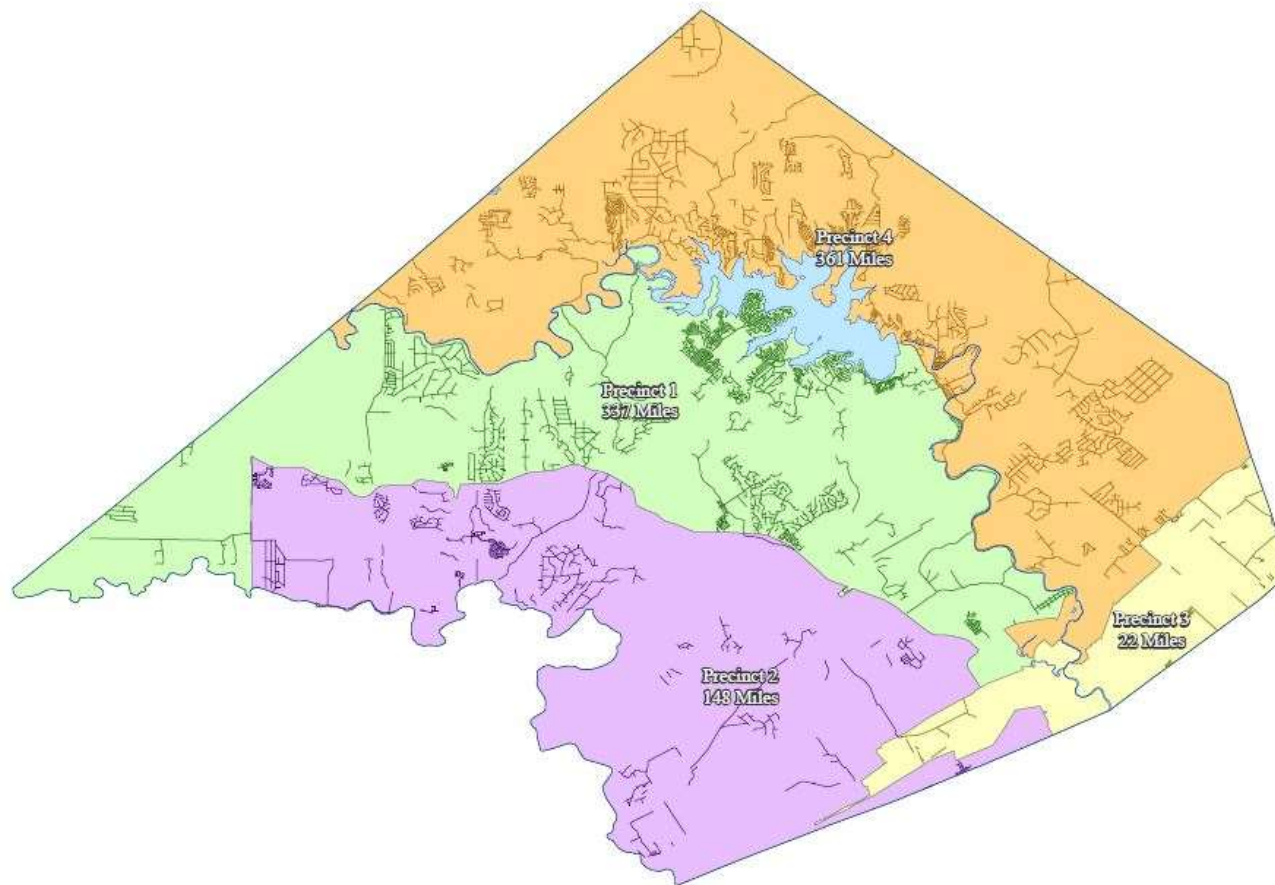
TOTAL MILES BY PRECINCT

PRECINCT 1 - 337 MILES

PRECINCT 2 - 148 MILES

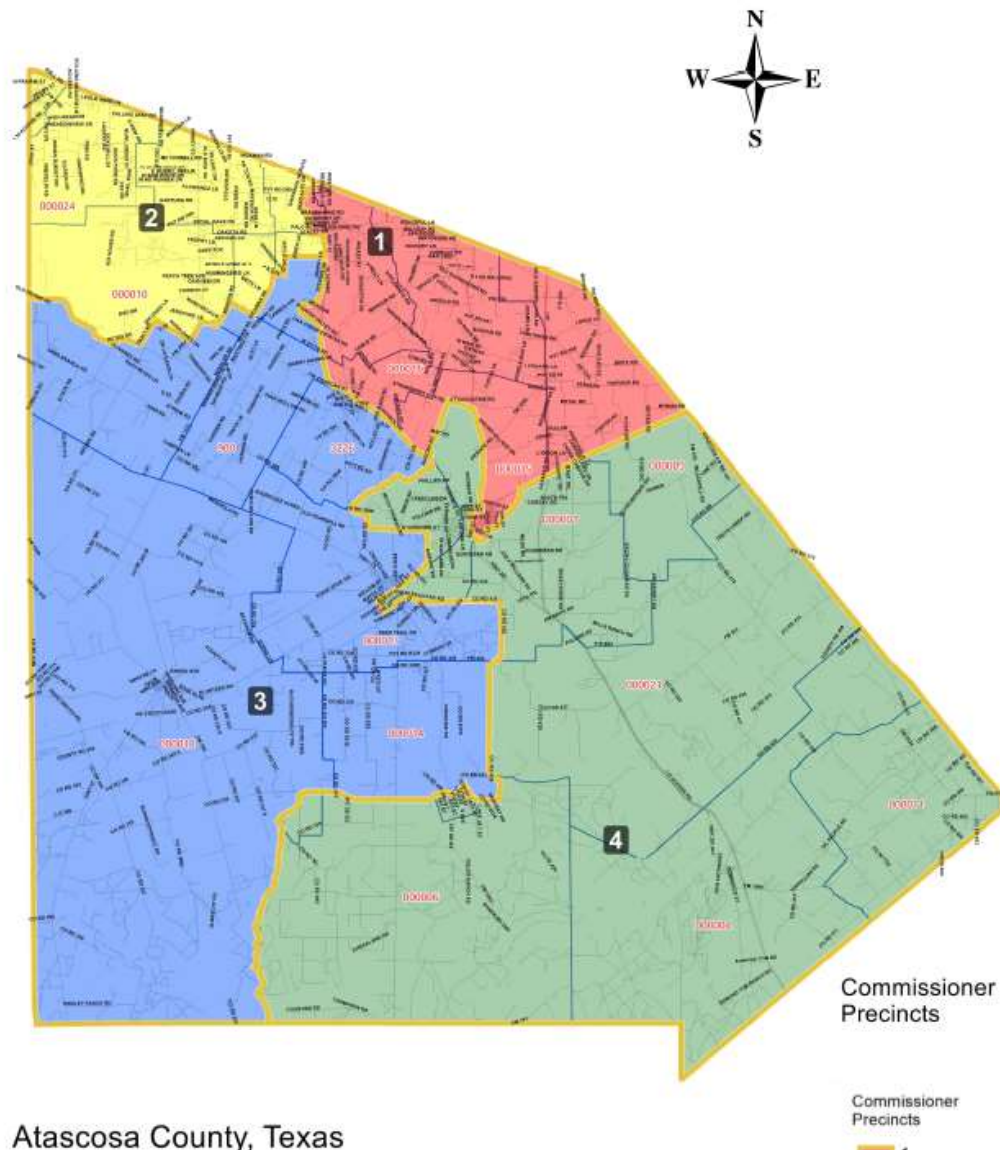
PRECINCT 3 - 22 MILES

PRECINCT 4 - 361 MILES



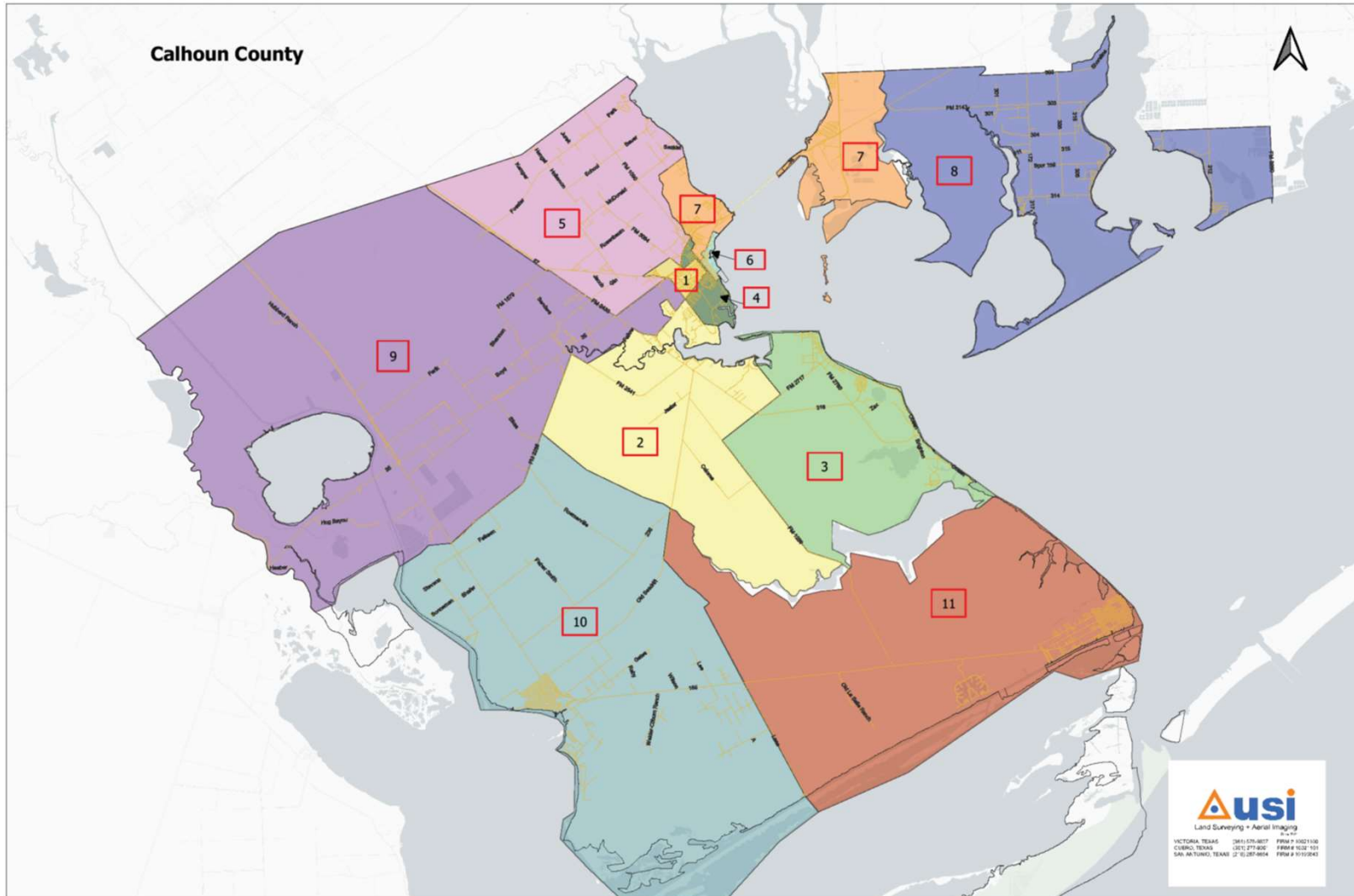
For information concerning the source of the data, please contact:
Comal County Engineer's Office
195 David Jones Dr.
New Braunfels, TX 78132
(830)608-2090

This product is for informational purposes and may not have been prepared for or be suitable for legal, engineering, or surveying purposes. It does not represent an on-the-ground survey and represents only the approximate relative location of property boundaries.



Atascosa County, Texas

Calhoun County





Commissioner Mark Gillespie

February 25 · 🌐

...

PCT1

COMMISSIONERS REPORT

I am a huge believer in water drainage done right when it comes to our road ways. We are currently on strawberry city road where we are making bar ditches and setting culvert pipes. Yes we could just swing through there and chipseal that would be faster. However, faster does not last longer. When water can settle on a road it seeps its way into the layers of materials that make that road what it is. In time it loosens the materials and when travel... See more



Commissioner Mark Gillespie

January 27 · 🌐

...

PCT1 ⚠️

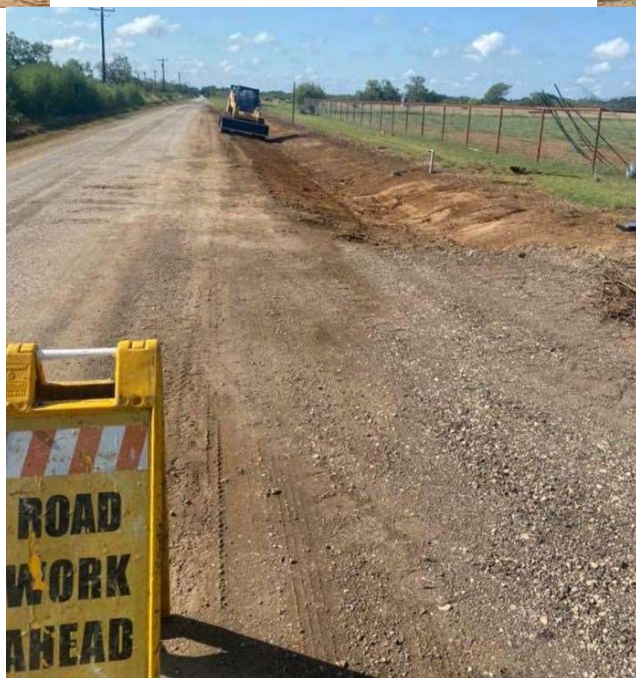
Today's report is a safety matter at the intersection of strawberry city road and Slomchinski roads. Approach with caution ⚠️ do to a conversion to the intersection there.

This was preformed for safety reasons only. I've been asked by several "how's it been unsafe if no one's been in an accident there?" Well you know what..... "I'm not gonna sit around waiting for an accident to happen just to make something that's obviously unsafe safer." The changes may slow you do... See more









Grants

Fuel tanks 25K

mosquito 250K

Formosa tire cutter 15K

Radio 1.4 million

MBFD 850K

Chocolate Bayou 1 million

Alamo Drainage 1.2 million

Chocolate Bayou Bat ramp 170K

Indian point 120K - 2.5 million

cattle guard light 235K

ChmP 102K 7 million

Radios total

\$3,259,415.61

Towers + Dispatch

1,487,988

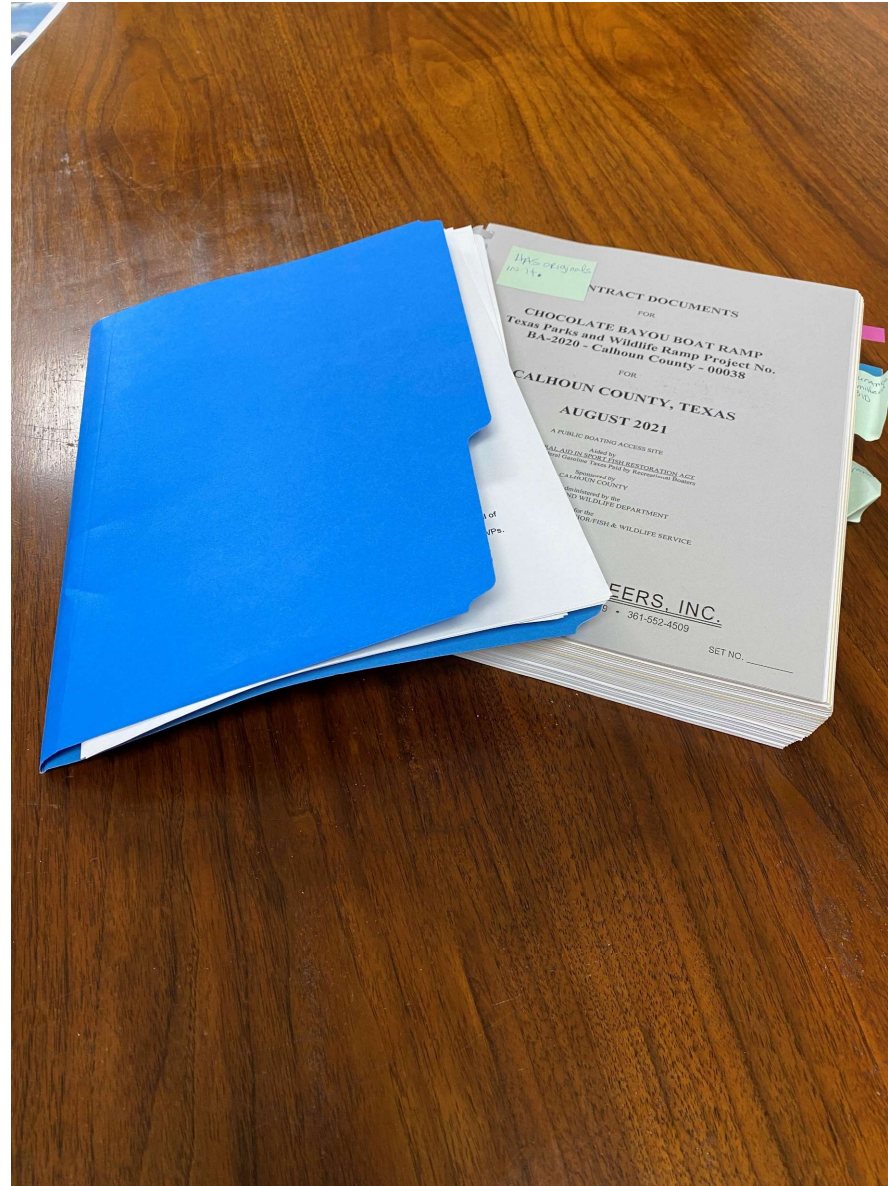
Budget

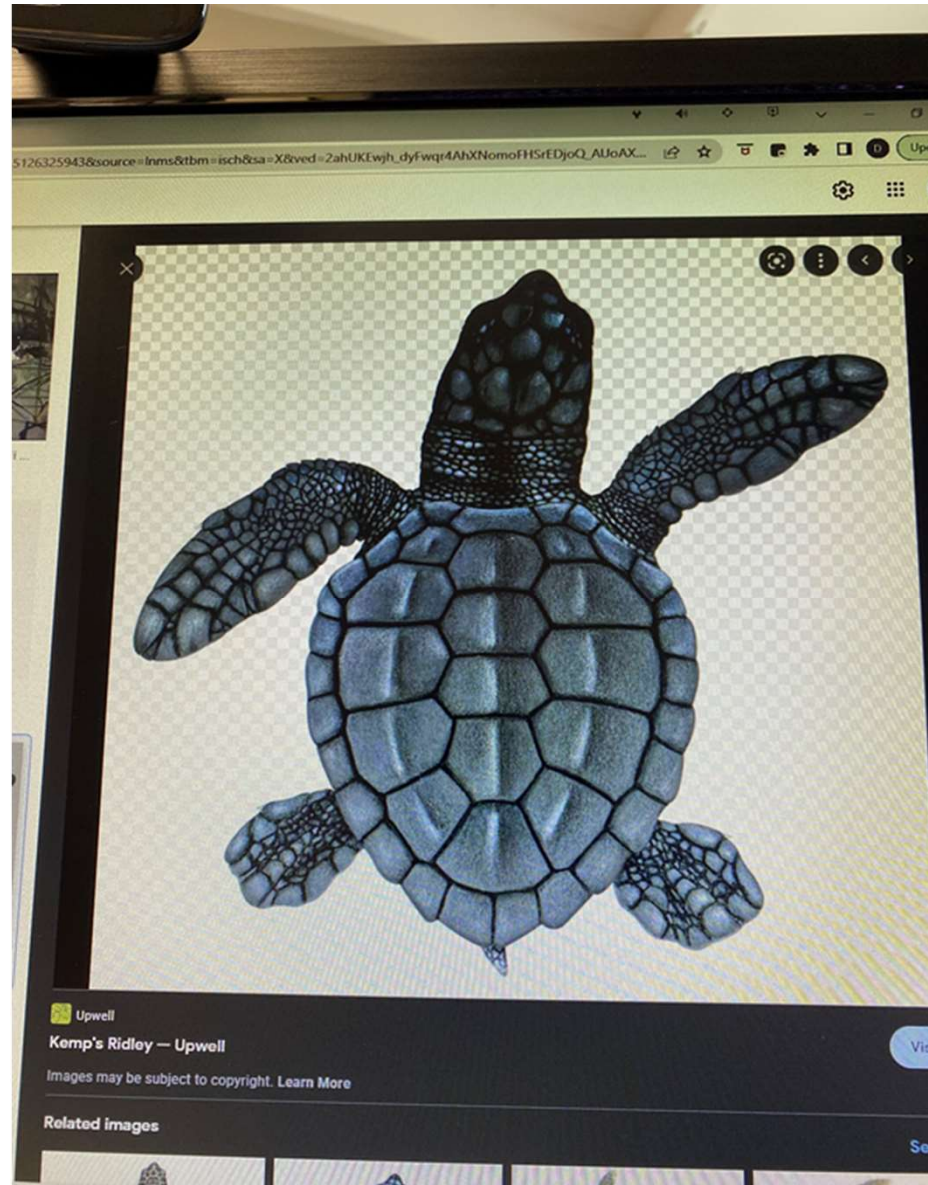
1,781,580

Rudios

1,771,427.61

\$10,152,39 under budget







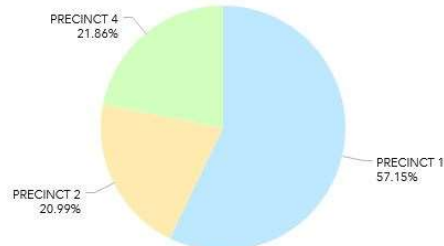
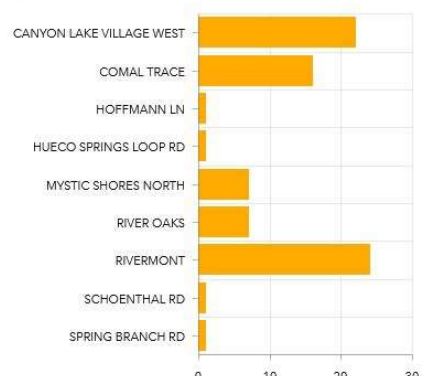
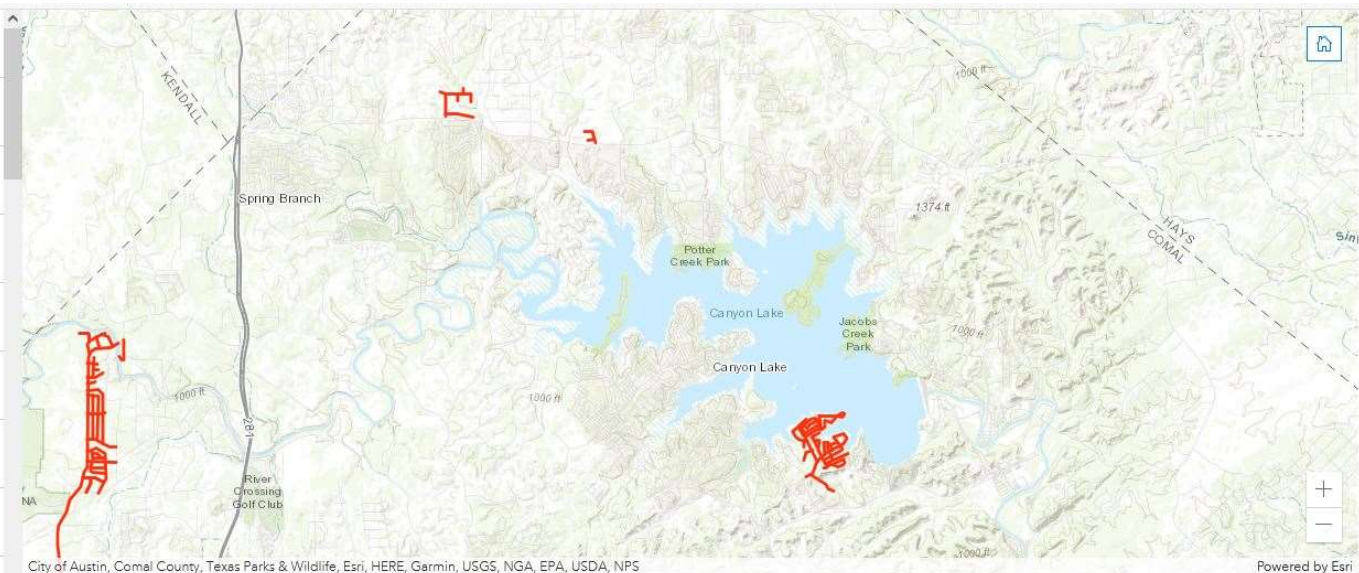




ALVINS WAY
COMAL TRACE
1.68 Day(s) to Complete
AMANDA
CANYON LAKE VILLAGE WEST
2.35 Day(s) to Complete
BARBARA DR
CANYON LAKE VILLAGE WEST
1.93 Day(s) to Complete
BINDWEED LN
MYSTIC SHORES NORTH
2.27 Day(s) to Complete
BLUE WATER DR
CANYON LAKE VILLAGE WEST
3.03 Day(s) to Complete
BRIDGET DR
CANYON LAKE VILLAGE WEST
0.70 Day(s) to Complete
BUCK TRL
CANYON LAKE VILLAGE WEST
2.30 Day(s) to Complete
CALM WATER
CANYON LAKE VILLAGE WEST
0.52 Day(s) to Complete
CANYON HTS
MYSTIC SHORES NORTH
0.49 Day(s) to Complete
CINDY DR
CANYON LAKE VILLAGE WEST
2.78 Day(s) to Complete
COLLEEN DR
CANYON LAKE VILLAGE WEST
10.58 Day(s) to Complete
COMAL CREST
COMAL TRACE
1.05 Day(s) to Complete
COMAL OAK
COMAL TRACE
0.20 Day(s) to Complete
COMAL PEAK
COMAL TRACE
0.99 Day(s) to Complete

Last update: a day ago

2023 Proposed Paving 2022 Paving Plan 2021 Paving Plan 2020 Paving Plan



Number of Roads
80

Length of Road(s)
274,275.959 Ft
51.946 Miles

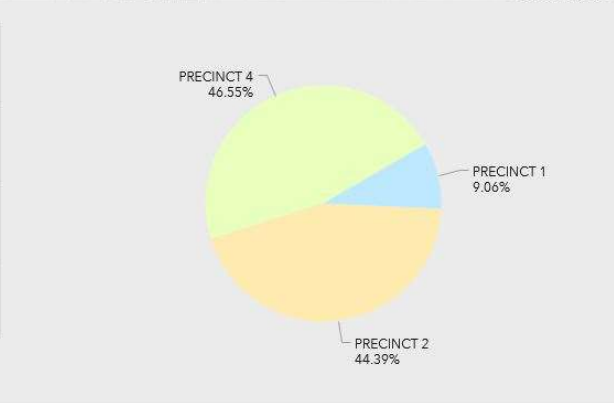
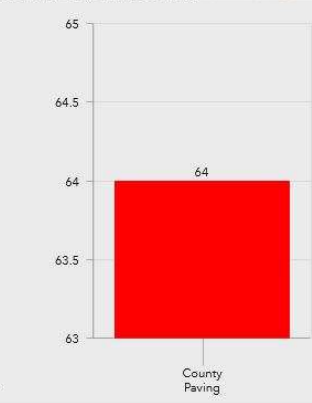
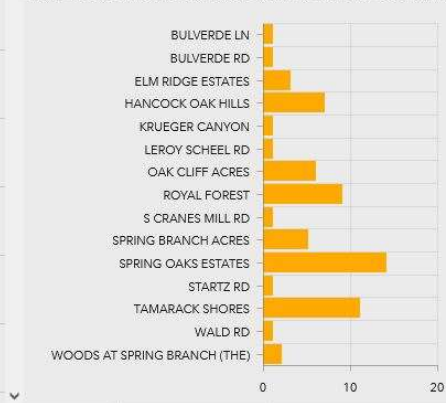
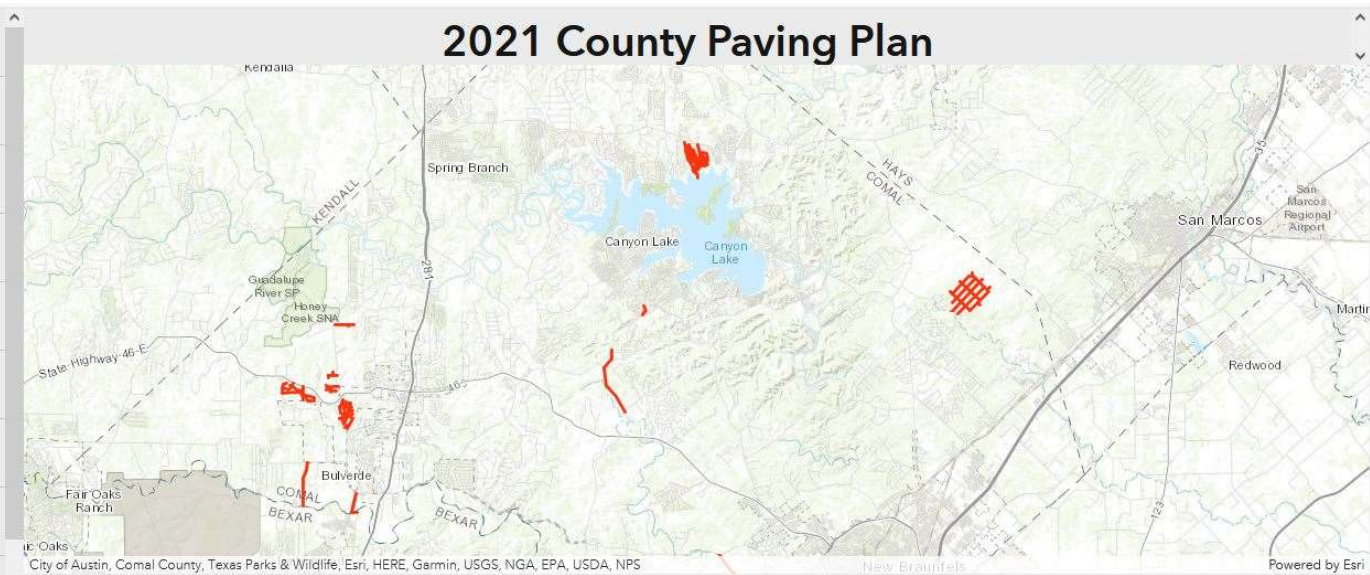
Estimated Asphalt Tonnage
58,550.861
\$3,220,297.328 based on \$55/ton

Estimated CSS 1H
30,590.836
\$59,652.131 based on 1.95/gallon

Estimated Failure Repair work
\$84,644.035

Seal Coat Cost
\$180,639
Estimated Time to Complete (Days)
208.332

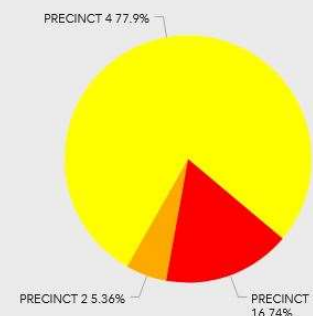
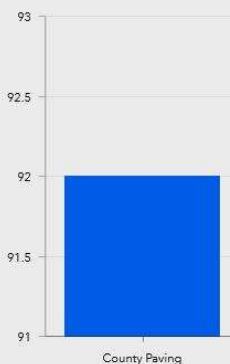
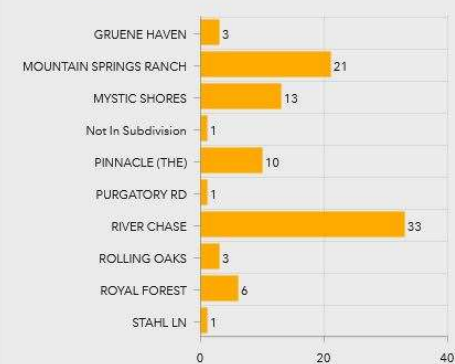
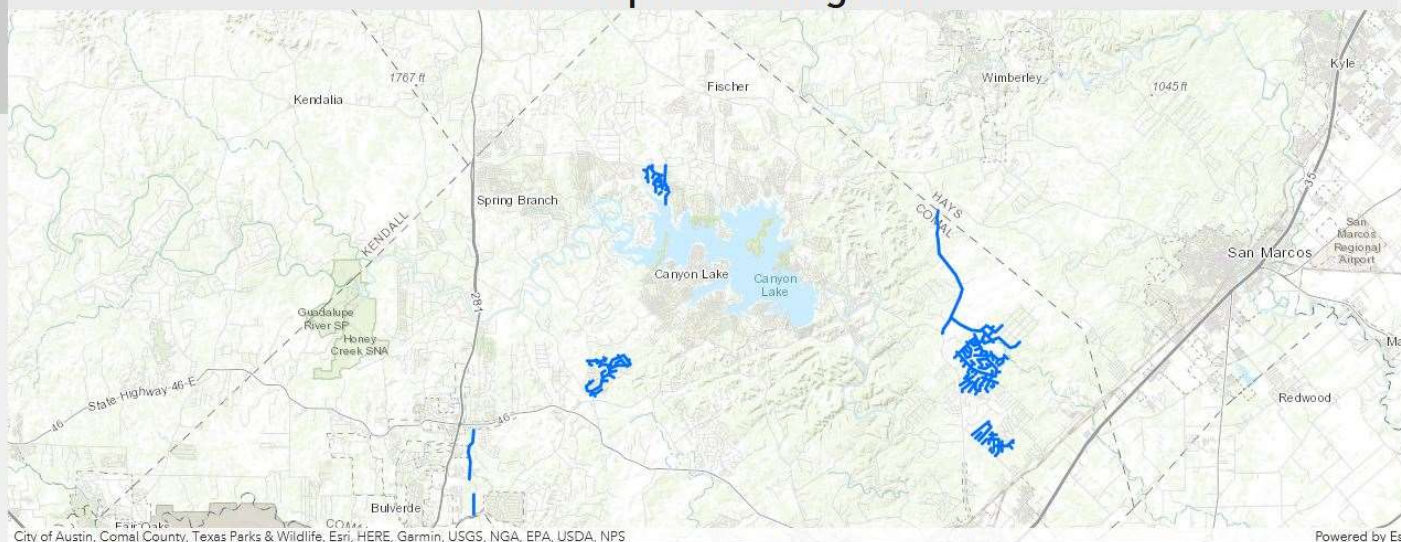
KRUEGER CANYON
KRUEGER CANYON
20.49 Day(s) to Complete
BULVERDE LN
BULVERDE LN
3.63 Day(s) to Complete
STARTZ RD
STARTZ RD
1.84 Day(s) to Complete
LEROY SCHEEL RD
LEROY SCHEEL RD
8.12 Day(s) to Complete
CASTLEWAY
ROYAL FOREST
5.07 Day(s) to Complete
EL RINCON
ROYAL FOREST
0.51 Day(s) to Complete
IMPERIAL DR
ROYAL FOREST
0.68 Day(s) to Complete
LAZY FOREST
ROYAL FOREST
5.10 Day(s) to Complete
LOST TRL
ROYAL FOREST
8.21 Day(s) to Complete
MAPLEWOOD DR
ROYAL FOREST
0.54 Day(s) to Complete
MISTY HOLW
ROYAL FOREST
6.98 Day(s) to Complete
ROYAL GATE
ROYAL FOREST
6.28 Day(s) to Complete
WEGNER RD
ROYAL FOREST
35.70 Day(s) to Complete
CALICHE CT
SPRING OAKS ESTATES
0.44 Day(s) to Complete



Number of Roads
64
Length of Road(s)
216,170.385 Ft
40.941 Miles
Estimated Asphalt Tonnage
55,691.019
\$3,063,006.041 based on \$55/ton
Estimated CSS 1H
29,096.666
\$56,738.499 based on 1.95/gallon
Estimated Failure Repair work
\$93,699.292
Thoroughfare = 1.01 ~ All other = .183 Facts
Shoulder Up Cost
\$181,321.73
.7575 per foot or 4K per Mil
Estimated Time to Complete (Days)
222.009

GLEN WOOD DR
GRUENE HAVEN
1.42 Day(s) to Complete
GRUENE HAVEN
GRUENE HAVEN
2.99 Day(s) to Complete
MILL RUN
GRUENE HAVEN
1.66 Day(s) to Complete
BIG SPG
MOUNTAIN SPRINGS RANCH
0.37 Day(s) to Complete
COMAL SPGS
MOUNTAIN SPRINGS RANCH
20.34 Day(s) to Complete
CYPRESS CRK
MOUNTAIN SPRINGS RANCH
0.32 Day(s) to Complete
FLAT CRK
MOUNTAIN SPRINGS RANCH
0.72 Day(s) to Complete
FORK CRK
MOUNTAIN SPRINGS RANCH
0.37 Day(s) to Complete
GRAYS PEAK
MOUNTAIN SPRINGS RANCH
0.15 Day(s) to Complete
HIGHLAND SPGS
MOUNTAIN SPRINGS RANCH
1.15 Day(s) to Complete
HOLLAND SPGS
MOUNTAIN SPRINGS RANCH
2.31 Day(s) to Complete
JACKSON CRK
MOUNTAIN SPRINGS RANCH
0.84 Day(s) to Complete
LONGS PEAK
MOUNTAIN SPRINGS RANCH
1.10 Day(s) to Complete
MOUNT BEAR
MOUNTAIN SPRINGS RANCH
0.40 Day(s) to Complete
MOUNTAIN SPRGS

2022 Proposed Paving Plan



Number of Roads

92

Length of Road(s)

263,459.87 Ft

49.9 Miles

Estimated Asphalt Tonnage

61,650

\$3,889,076 based on 2022 Cost Change Analysis

Estimated CSS 1H

32,201

\$62,791 based on 1.95/gallon

Estimated Failure Repair work

\$255,816

Thoroughfare = 2.65 ~ All other + .65 Factor

Shoulder Up Cost

\$199,571

.7575 per foot or 4K per Mile

Estimated Time to Complete (Days)

246.6

2023 Proposed Paving 2022 Paving Plan 2021 Paving Plan 2020 Paving Plan





Commissioner Mark Gillespie

April 7, 2021 · 🌐

...

PCT1

And yet another outstanding citizen that left me their name in their thrown out belongings. They are being charged and picking up their mess.



Commissioner Mark Gillespie

November 17, 2021 · 🌐

...

Great job to all members of this team to make this stop.



Sheriff David Soward, Atascosa County, Texas

November 17, 2021 · 🌐

Late this morning, Atascosa County Sheriff's Deputies arrested Lupe Arguijo Gonzales, age 63, formerly of the Leming area, on a charge of Illegal Dumping over 1,000 pounds. Gonzales was indicted by an Atascosa County Grand Jury earlier this month following a lengthy investigation by the ACSO Criminal Investigation Division. The investigation was the result of approximately 100,000 tires being dumped on property on Verdi Road, formerly under the control of Gonzales. The property was the scene of a major tire fire back on March 6th. Sheriffs Investigators were assisted in the investigation by the Atascosa County Fire Marshal, State TCEQ Investigators and Atascosa County Precinct One Commissioner's Office. Bond on Gonzales on the State Felony offense is set at \$25,000. The investigation is still ongoing and additional arrests are anticipated.

-Sheriff David Soward