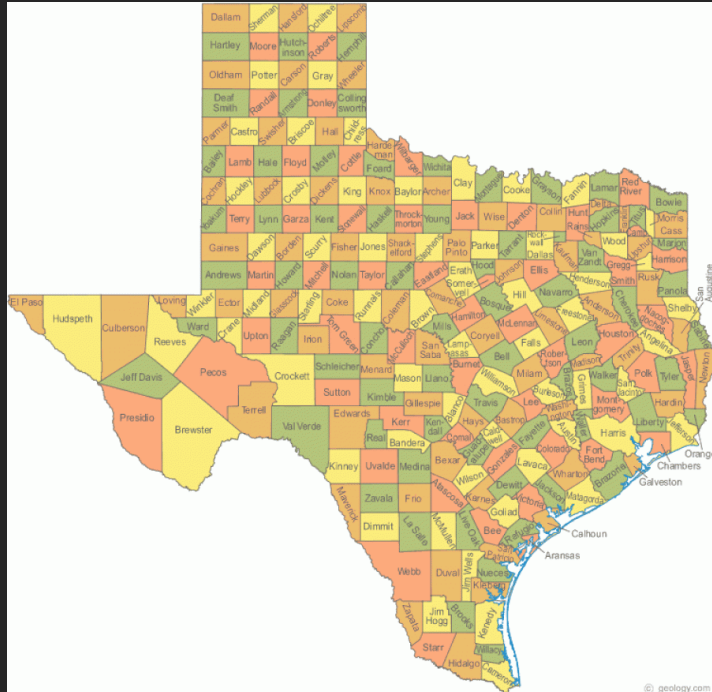




February 22, 2022

Learning Objectives

2



County Indigent Health Care Program

Health care services to eligible residents through the counties, hospital districts and public hospitals in Texas.



Local Health Authority

The role of the Local Health Authority.



Financial Support & Resources

Accessing Financial support & other resources from State & Federal governments.

February 22, 2022

Chapter 61 of the Health & Safety Code



This Chapter is a "Statutory Obligation" of local Texas Governments to provide Health Care Coverage and may be cited as the "Indigent Health Care and Treatment Act."



Counties



Hospital Districts



Public Hospitals

February 22, 2022

HISTORY




The Indigent Health Care Act was passed by the Texas Legislature in May 1985 with requirement for counties to implement on September 1, 1986.

The act spelled out how local governments would handle a century old Texas law that requires counties to “provide for the support of paupers, residents of their county who are unable to support themselves”. *Sec. 81.027 of the Local Government Code*

This law addressed health care ONLY. All counties are still responsible for non-health “pauper” care, such as burial.

CIHCP



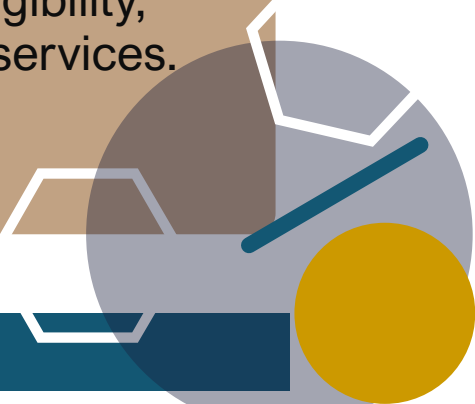
The County Indigent Health Care Program (CIHCP) provides health care services to eligible residents through the counties, hospital districts and public hospitals in Texas.

Chapter 61, Health and Safety Code,

defines the responsibilities of counties, hospital districts, and public hospitals in providing health care to eligible residents who are considered indigent.

Texas Administrative Code, Title 25, Part 1, Chapter 14

establishes the County Indigent Health Care Program (CIHCP) rules regarding program administration, determining eligibility, and providing services.



Counties, Hospitals, and Public Hospitals



Counties that are not fully served by a public facility, i.e., a hospital district or a public hospital, are responsible for administering an indigent health care program for eligible residents of all or any portion of the county not served by a public facility.

Hospital districts and public hospitals are required to establish an application procedure and provide health care to eligible residents who reside in the hospital district's or public hospital's service area and meet the minimum resource and income limits.

The Role of Texas Department of State Health Services (DSHS)

- Establishes minimum eligibility standards, application, documentation, and verification procedures that are consistent with the analogous procedures used to determine eligibility in the Temporary Assistance for Needy Families (TANF)-Medicaid program that counties should use in determining CIHCP eligibility,
- DSHA defines the basic and department-established optional health care services in accordance with the TANF-Medicaid program,
- Establishes the payment standards for basic and DSHS-established optional health care services in accordance with the TANF-Medicaid program,
- Provides technical assistance and training to counties, hospital districts, and public hospitals,

The Role of Texas Department of State Health Services (DSHS) *Continued*:

- Provides technical assistance and training to counties, hospital districts, and public hospitals,
- Processes eligibility disputes between providers of health care assistance and governmental entities or hospital districts, and
- Administers the state assistance fund. Counties may qualify for state assistance funds when they exceed 8% of the county's general revenue tax levy (GRTL) for basic and DSHS-established optional health care services provided to eligible county residents.

WHO DOES THE CIHCP COVER?



Households who meet the criteria of

- income,
- residency,
- resource,
- household composition
- & who are not categorically eligible for the Texas Medicaid Program.

WHAT IS THE CIHCP CRITERIA?



Income

wages earned
income. noun
money rec
on a regu
work

A County= must adopt minimum income of 21% FPL but may adopt less restrictive income standards.
(Most = 21-25%).

Public Hospitals = May use the TDSHS established income & resource guidelines or adopt less restrictive standards.

- Very large HD such as Parkland, Bexar, Harris may have income criteria of 200% FPL or greater
- Most other smaller Hospital Districts and Public Hospitals range between 21-50% FPL



Household composition

Household includes all those who are legally responsible for each other, excluding those in the household who receive Medicaid

Household
Comp.

February 22, 2022

What are the eligible categories for the Texas Medicaid Program?



Children under 19 years old



Pregnant Women



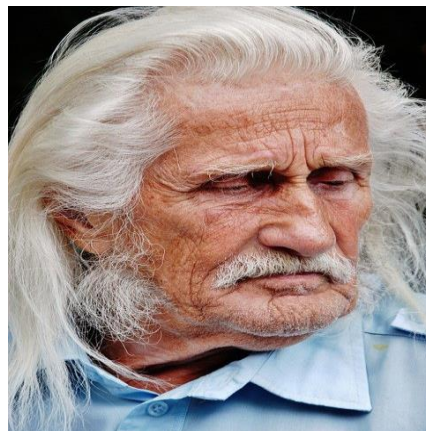
**Adults caring for a
relative child enrolled in
Medicaid**



**Youth who have aged
out of Foster Care**



**Women with Breast
or Cervical Cancer**



People aged 65 or older



People with Disabilities

WHAT IS THE CIHCP CRITERIA - Continued?



Residency



Residency Continued...

- No duration requirements
- Residency is not equal to citizenship



- Resides or intends to remain and reside in the local government jurisdiction in which he/she applies

College students, those in treatment facilities, etc., should apply in their resident jurisdiction, which may or may not be where they “temporarily reside” to attend school or get treatment.

- Total countable household resources do not exceed \$2000
- Total countable household resources do not \$3,000 when a person who is aged/disabled and meets relationship requirement resides in the home.

Resources

February 22, 2022

FEDERAL POVERTY LEVEL

14




# of Individuals in the CIHCP Household	21% FPG Minimum Income Standard	50% FPG Maximum Income Standard
1	\$219	\$521
2	\$296	\$705
3	\$374	\$889
4	\$451	\$1,073
5	\$528	\$1,258
6	\$606	\$1,442
7	\$683	\$1,626

February 22, 2022

FEDERAL POVERTY LEVEL....Continued

15

# of Individuals in the CIHCP Household	21% FPG Minimum Income Standard	50% FPG Maximum Income Standard
8	\$761	\$1,810
9	\$838	\$1,994
10	\$915	\$2,178
11	\$993	\$2,363
12	\$1,070	\$2,547
		

February 22, 2022

CIHCP BASIC SERVICES



- Immunizations
Medical screening services.
- Annual physical examinations
- Inpatient hospital services
- Rural health clinics



- Outpatient hospital services, including hospital-based ambulatory surgical center services

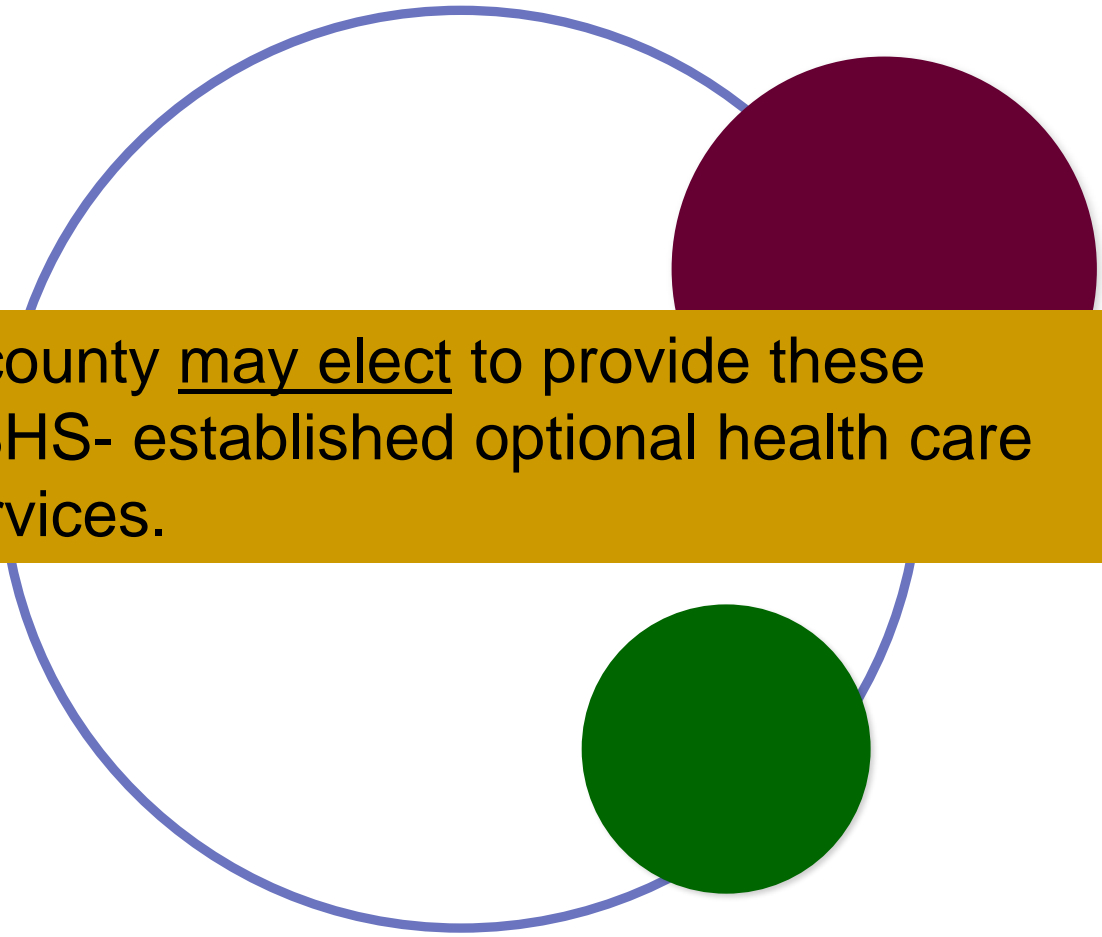


- Laboratory and x-ray services
- Family planning services
- Physician services



- Payment for not more than three prescription drugs per month
- Skilled nursing facility services

OPTIONAL SERVICES



A county may elect to provide these DSHS- established optional health care services.

- Advance Practice Nurse (APN)
- Ambulatory Surgical Centers (ASC)
- Colostomy medical supplies and equipment
- Counseling provided by a licensed clinical social worker (LCSW), a licensed marriage family therapist (LMFT), a licensed professional counselor (LPC), or a PH.D. psychologist
- Dental Care
- Diabetic medical supplies and equipment
- Durable medical equipment (DME)
- Emergency Medical Services (EMS)
- Home and community health care services
- Physician Assistant (PA)
- Vision care, including glasses
- Federally Qualified Health Center (FQHC)
- Occupational Therapy
- Physical Therapy
- Other Medically necessary services or supplies that the local governmental municipality/entity determines to be cost effective

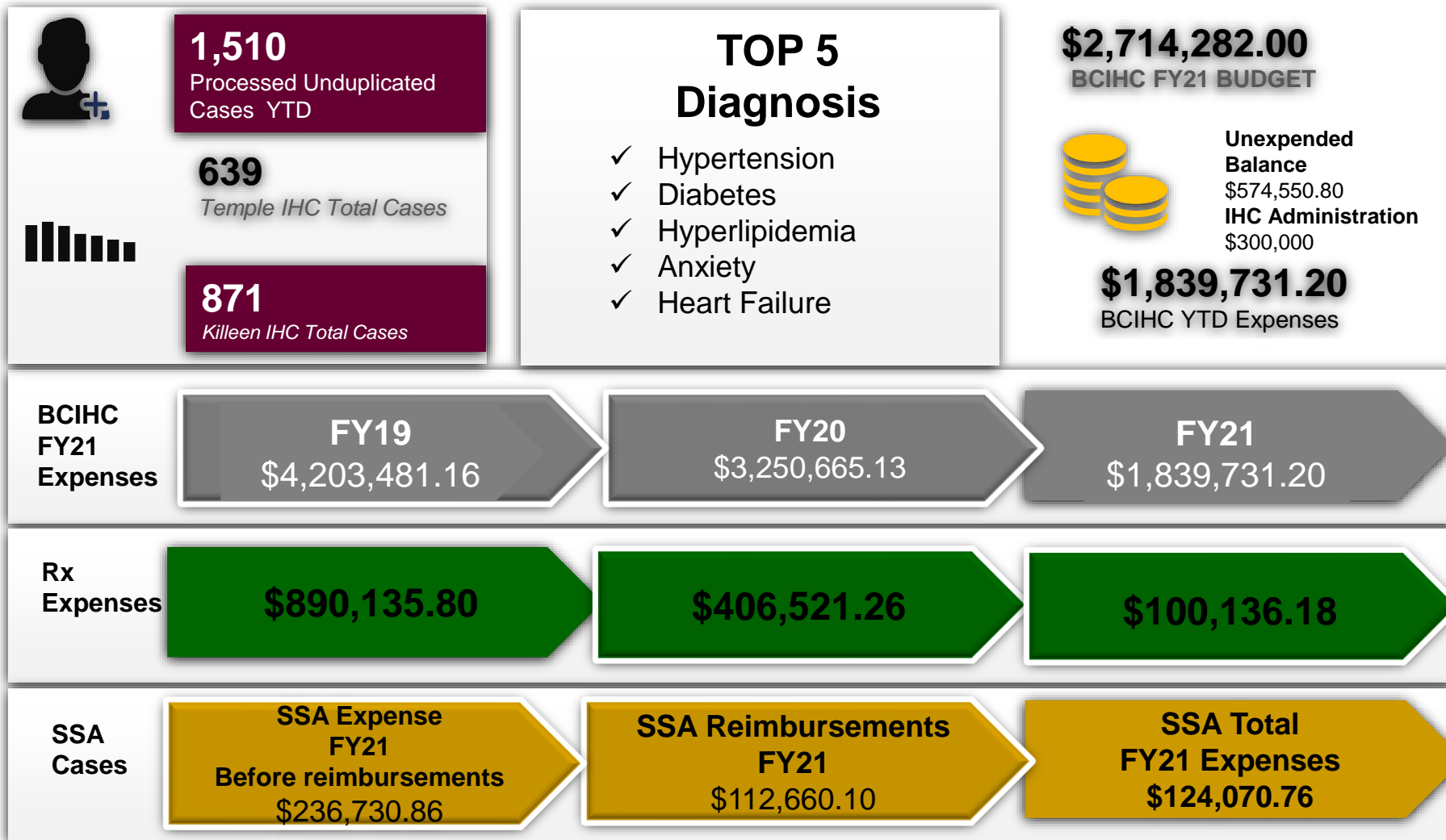
Financial Support and Resources



February 22, 2022

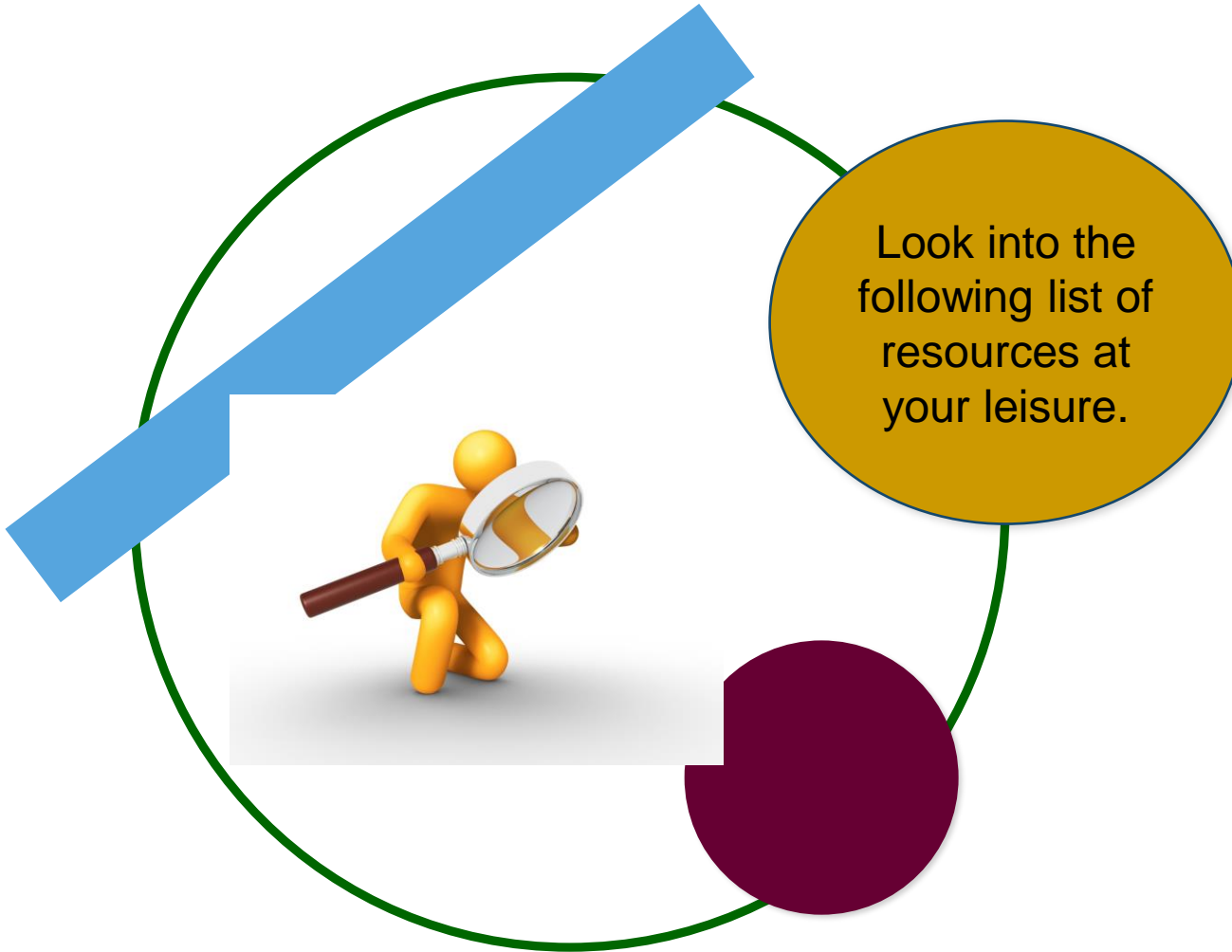
Bell County Community Clinic Project Collaborative

FY21 EXPENSES



February 22, 2022

State & Federal Resources



- Community Development Block Grants
- FEMA Temporary Emergency Relief
- Texas Indigent Defense Commission
- Texas Department of State Health Services
- Texas Department of Health & Human Services
- Office of the Governor
- Texas Juvenile Justice Division
- Texas Department of Criminal Justice, Community Justice Division
- Various Other Criminal Justice Grants
- 1115 Waivers

For more information.....

- Burial of Deceased Paupers

<http://www.statutes.legis.state.tx.us/Docs/HS/htm/HS.694.htm>

- County Indigent Health Care Program

<http://www.dshs.state.tx.us/cihcp/>

- Texas Medicaid Transformation 1115 Waiver

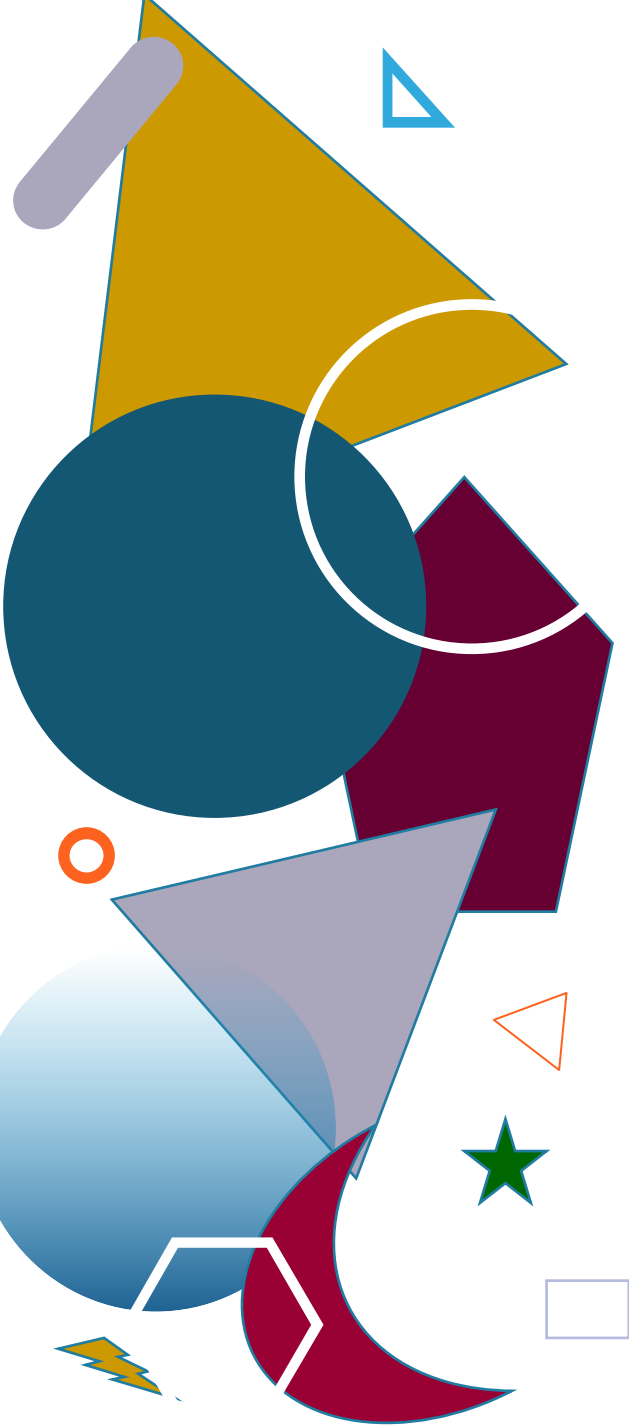
<http://www.hhsc.state.tx.us/1115-waiver>

- Community Development Block Grant Program

http://portal.hud.gov/hudportal/HUD?src=/program_offices/comm_planning/communitydevelopment/programs

- Texas Indigent Defense Commission

<http://www.tidc.texas.gov/grants-reporting/discretionary.aspx>



THANK YOU



Ebony Jackson
Director
Bell County Indigent Health Services
PO Box 880
Killeen, TX 76540
254-618-4193
Ebony.Jackson@bellcounty.Texas.gov

www.bellcountytexas.com